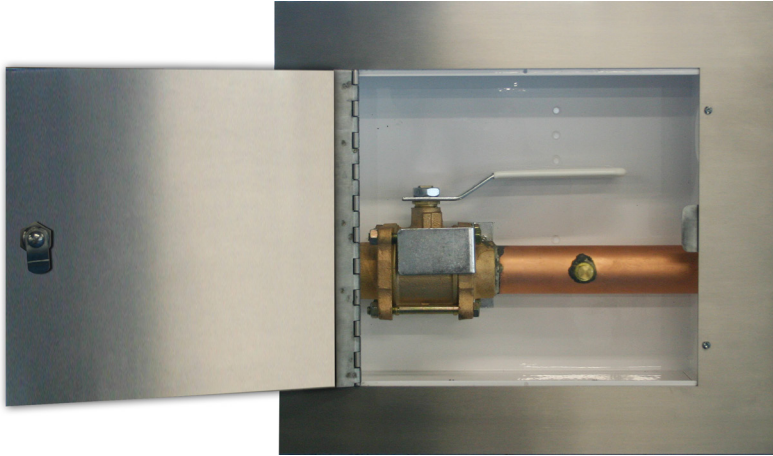


For Zone Indicator Panel

Box Assembly NFPA



General Specifications:

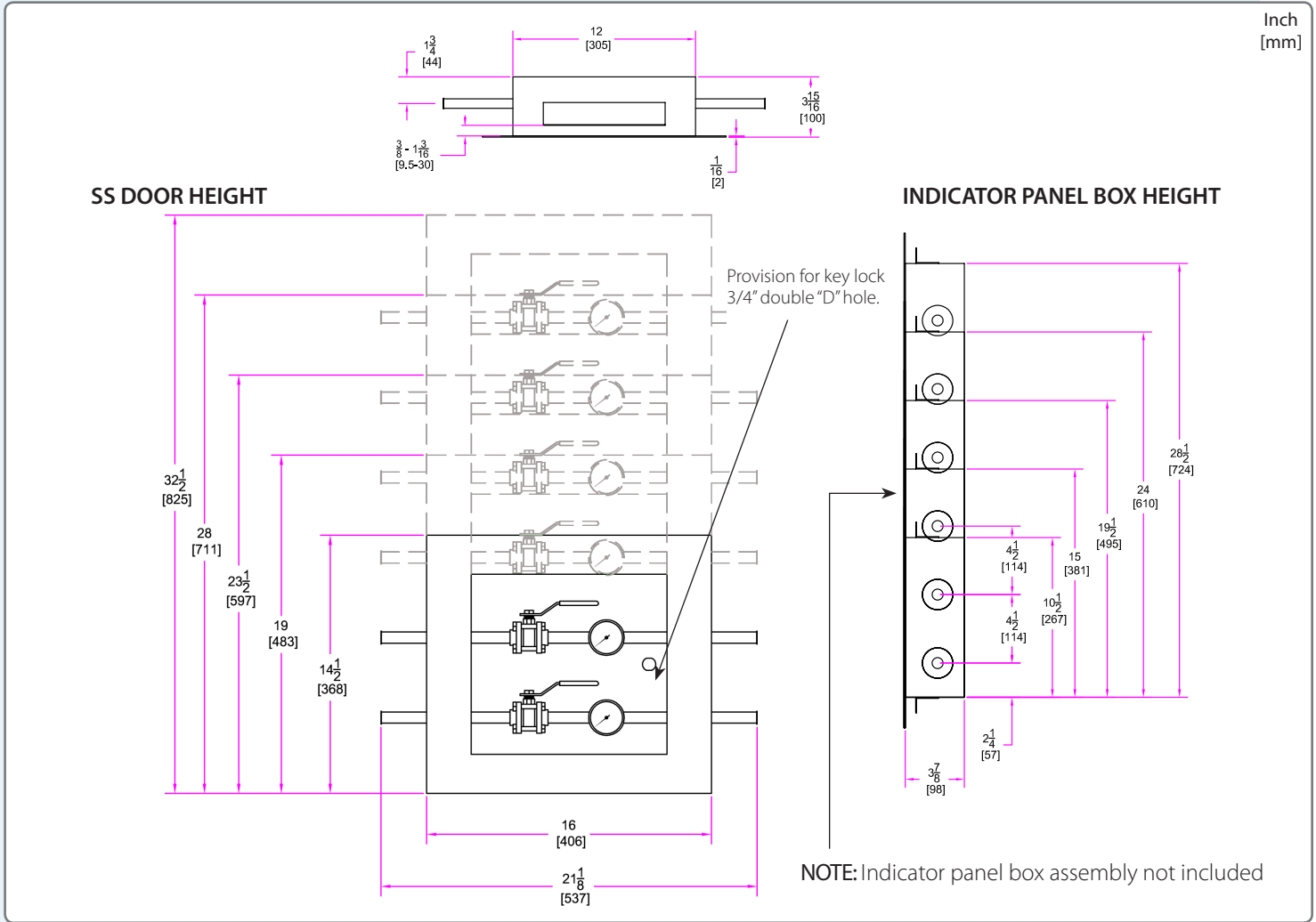
Security Door and Lock shall be an Amico Alert-1 series.

The stainless steel door frame assembly shall be constructed of 14 gauge stainless steel and shall be mounted to the back box assembly by standard number 6-32 screws as provided. The door shall be spot-welded to the frame with a stainless steel hinge. Access to the box shall be by means of a lock and key.

Amico products comply with NFPA 99.

Project

Technical Specifications



Model Numbers

V-X-DOOR-Q-SS

The Letter "Q" Represents the Quantity of Indicators:

2 Zone Indicators	= 2
3 Zone Indicators	= 3
4 Zone Indicators	= 4
5 Zone Indicators	= 5
6 Zone Indicators	= 6

***NOTE:** Cam-Lock and Key for Stainless Steel Door sold separately

V-X-DOOR-LOCK

- A Single zone indicator box assembly will require a double ganged size door
- Zone indicator box assembly not included

Distributed By:

Broward A&C Medical 1533 SW 1st Way, Suite F17 Deerfield Beach, FL 33441
 Tel: 954.725.1470 Ext 403 | Website: OnlineOrders@MedicalGasSupplier.com
www.MedicalGasSupplier.com